



DAXeam

Enterprise Asset Management made for Microsoft Dynamics AX





Daxeam

What is the total cost of your assets?

Asset intensive industries are heavily dependent on maximizing operating time, minimizing maintenance costs, and meeting health, safety and environmental compliance requirements. Unplanned equipment downtime causes longer outages, higher maintenance costs, lost revenue, increased risk, and a loss of control of your assets.

To achieve your operating goals and maximize the lifespan of your assets it is imperative to have tools that integrate with your maintenance strategy.

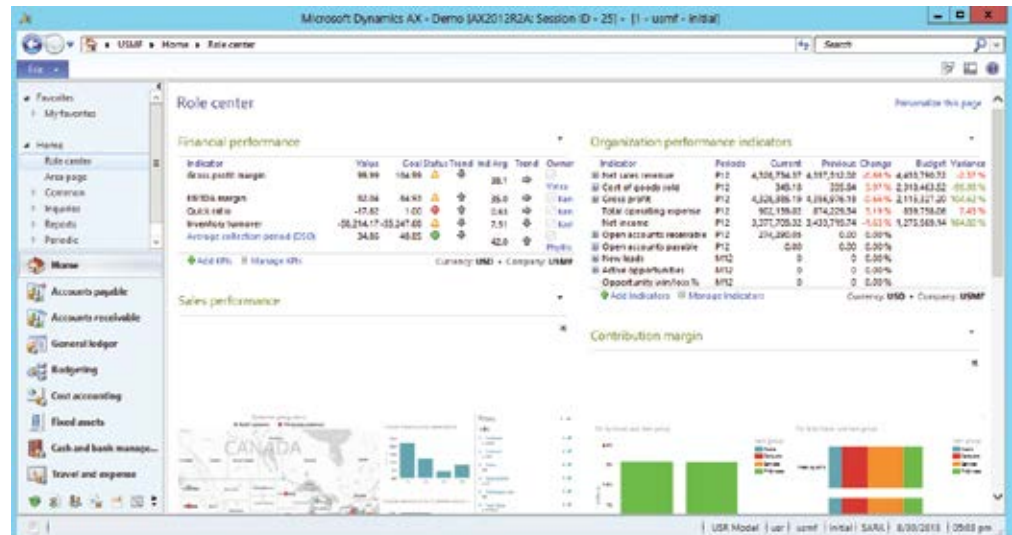
With Daxeam 2012 Enterprise Asset Management (EAM), you can:

- Reduce the risks of unscheduled down time which leads to lost production, missed operating targets, non-compliance with health, safety and environmental regulations.
- Reliably plan and schedule maintenance of your assets on time and on budget knowing that all necessary resources will be available ‘just in time’ according to your schedule.
- Achieve confidence in your maintenance budgets and know precisely where your maintenance dollars are being spent.
- Ensure your equipment is in the best possible condition, protecting your people and the environment.
- Provide unity between your finance and maintenance departments with one version of the truth while keeping financials invisible to maintenance workers.

Daxeam Enterprise Asset Management

Daxeam 2012 is a powerful EAM solution embedded directly within Microsoft Dynamics AX. Built for asset intensive industries, Daxeam is your competitive advantage for managing your asset lifecycle, operations, and regulatory compliance.

By leveraging out-of-the-box modules from Microsoft Dynamics AX 2012, Daxeam looks like and integrates with familiar Microsoft Office tools, making accessing information easier than ever before. That means less training, faster adoption and a higher return on your investment.



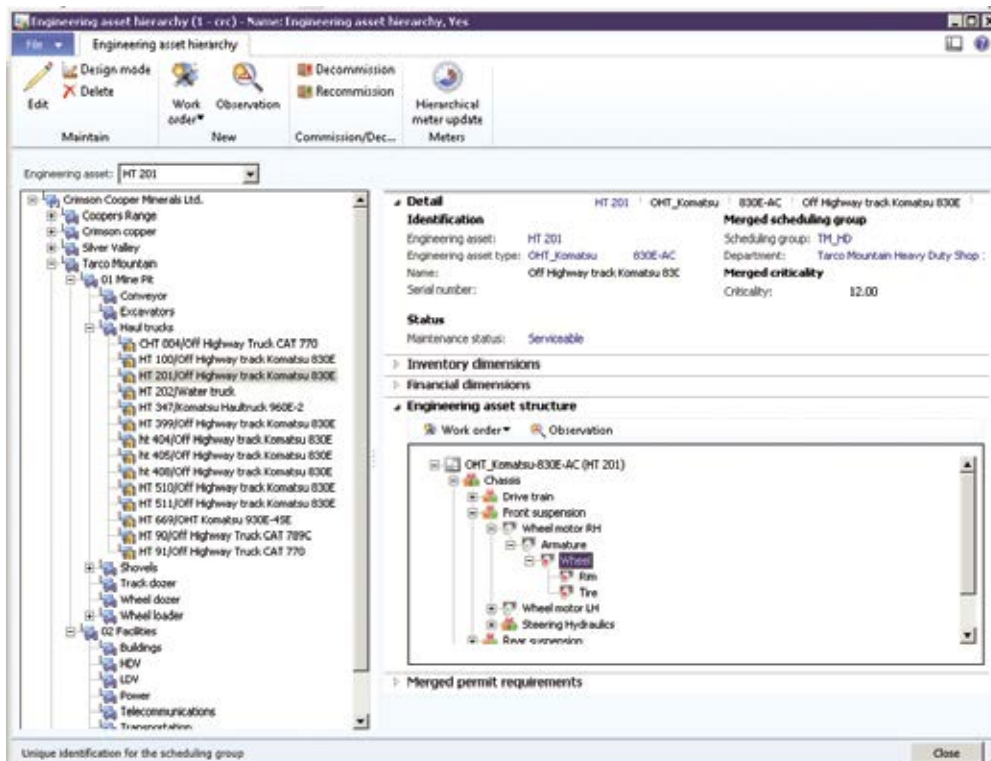
Role centers: The built in role centers provides an “at a glance” view of your maintenance operation

Daxeam delivers...

Improved operational uptime

Daxeam will maximize the uptime and utilization of your equipment by ensuring they are properly maintained.

- A complete picture of asset groupings, component histories and maintenance requirements allows you to more accurately plan for and manage the exchange, repair and maintenance of your assets and their substructures.
- Meters can be attached to any asset or component, allowing any number of user-defined measures to be captured. Triggers and thresholds applied to these meters can also be used to initiate maintenance work orders.
- Maintenance planning decreases the downtime of your valuable operating assets by allowing your maintenance organization to ensure the appropriate resources are available to complete the scheduled work efficiently.



Asset hierarchy and structure: Organize your assets into hierarchies and component sub structures



What you need when you need it

Daxeam's integration to the Microsoft Dynamics AX Supply Chain processes will give you control of inventory and purchasing.

- Through the use of Master Planning, inventory can be ordered based on the forecasted spare parts and scheduled start date for maintenance work orders. You will have better forecasting and management of spare parts inventory levels.
- Manage and reserve items with long lead-times, which is typical for specialized equipment repairs.
- Be notified when parts become available for your work order. Identify work orders where all required items are available.

Work to a plan

Daxeam will allow you to create repeatable and reliable maintenance plans.

- Build and deploy comprehensive maintenance programs by forecasting operational needs and thus required maintenance based on real-world estimates of workload.
- Use scheduling tools to increase confidence that parts, rotables, consumables, financial, human, and physical resources required to execute your maintenance programs will be available when needed.
- Compile a library of job templates as part of your continuous improvement process for better predictability of maintenance work.

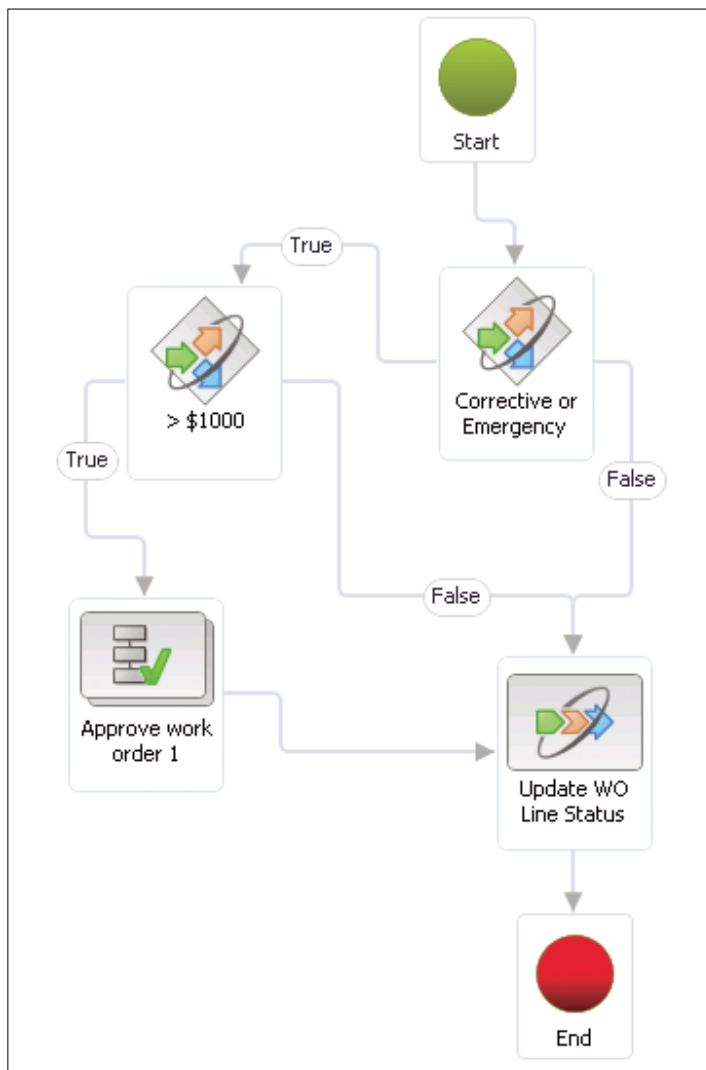


Scheduling tools: Schedule work orders at increasingly higher levels of granularity.

Knowledge Management, Document Control and Compliance

Daxeam provides the document and workflow driven compliance needed to manage your processes.

- Policy, document, and process management functions help you to centralize and standardize your maintenance practice.
- Document management functionality can be configured for routing and printing of documents.
- Condition based monitoring is configured to trigger maintenance actions based on measured thresholds.
- Utilize the integrated ERP features including workflow, approvals, business intelligence dashboards, and Microsoft SharePoint integration (for document management and sharing) to demonstrate compliance with regulatory standards and guidelines.



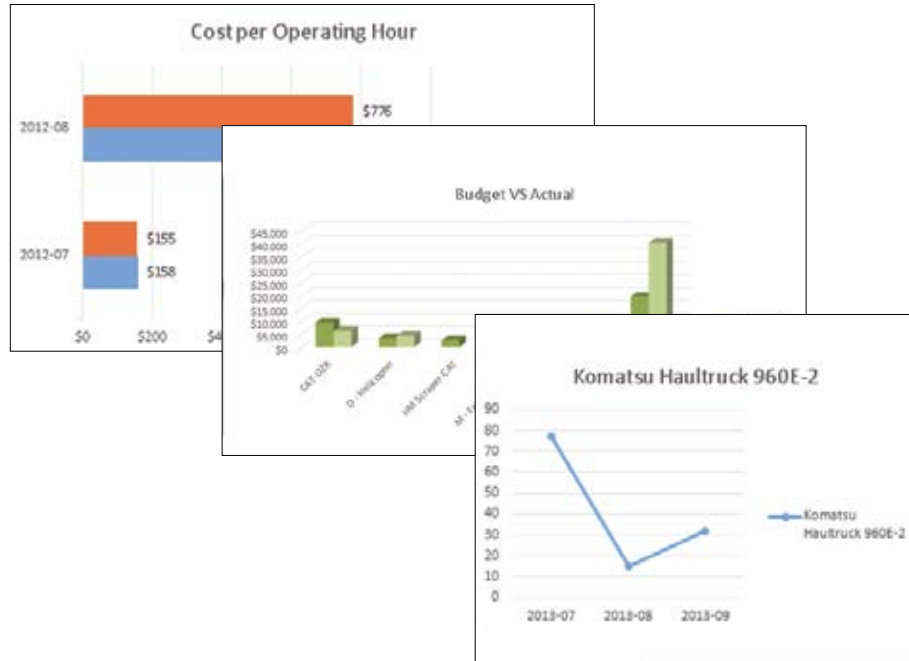
Approval workflow: Design your own work order or purchase approval processes



Insight into Utilization, Costs and Forecasts

Daxeam provides the information you need to comply with maintenance policies and operating targets.

- Role center dashboards provide a ‘cockpit’ aimed directly at specific positions in your organization. You can rapidly change these dashboards based on changes in business priority.
- Standard reporting features provide insight across your assets as well as your integrated ERP data.
- Use historical and forecasted costs to produce maintenance budgets with confidence.
- Start analysing your data right away using Daxeam’s built-in cubes.



Built in cubes: Use standard BI tools such as Excel to analyse your data

A single, integrated solution within your ERP system

Daxeam will help increase the efficiency and lower the costs of your maintenance department.

- Streamline internal procedures and processes through the direct integration of maintenance with finance, HR, and operations across the organization.
- Direct integration to Inventory ensures that long-lead time or special order items are ordered well in advance and that adequate inventory levels are on hand for upcoming, scheduled maintenance.
- Requisitions and purchase orders for unanticipated inventory can be raised directly from work orders. These documents can be configured to progress immediately through the workflow and approval processes, allowing you to be responsive to changing business needs.

Enterprise Asset Management (EAM)

Planned Maintenance

- ▶ Maintenance Organization Structure
- ▶ Preventative Maintenance
- ▶ Predictive Maintenance
- ▶ Resource Budgets
- ▶ Work Order Line Templates – Standard Jobs
- ▶ Drag & Drop Scheduling Tool
- ▶ Permit Management
- ▶ Job Pack Capability
- ▶ Maintenance Plans
- ▶ What-if Forecasting Scenario Analysis
- ▶ Scheduling Tools
- ▶ Meter and calendar based forecasting

Asset Management

- ▶ Equipment Types and Structures
- ▶ OEM Parts List
- ▶ Asset Register
- ▶ Asset Meters
- ▶ Document Management
- ▶ Engineering and Operational Status Control
- ▶ PM Status
- ▶ Equipment History
- ▶ Component Install History
- ▶ Warranty Management

Work Order Management

- ▶ Planned and unplanned maintenance
- ▶ Job templates
- ▶ Observations / Failures
- ▶ Work Requests
- ▶ Work Orders
- ▶ Integrated Workflow Management
- ▶ Work breakdown structure
- ▶ Work Order Approvals
- ▶ Work Order history
- ▶ Work Order Feedback

Additional Features

- ▶ EAM Business Process Driven Documentation
- ▶ Documents and Drawing Management
- ▶ GIS Integration
- ▶ Mobility Integration

Platform



- ▶ Financials
- ▶ Purchasing and Payables
- ▶ Human Resources
- ▶ Projects
- ▶ Inventory
- ▶ Fixed Assets
- ▶ Accounts Receivables
- ▶ Master Planning
- ▶ Expense Management

Analysis and Reporting

Collaboration

- ▶ Microsoft SharePoint
- ▶ Microsoft Project
- ▶ Enterprise Portal
- ▶ Microsoft Lync
- ▶ Microsoft Office

Reporting

- ▶ Daxeam Cubes
- ▶ Role center dashboard
- ▶ Operational reporting
- ▶ Cost and Budget reporting
- ▶ Failure and downtime reporting
- ▶ Standard Microsoft technologies: Power View, Power BI and Excel

Technology Stack



About Daxeam

To successfully meet the needs of asset intensive industries, the Daxeam team has brought together an internal skill set of Microsoft development and quality assurance skills, domain matter experts, application consultants and detailed market analysis to ensure Daxeam is market appropriate, functionally rich and technically robust.

Daxeam is the most powerful Enterprise Asset Management solution available to extend Microsoft Dynamics AX across asset management and maintenance processes. With Microsoft technology as its foundation, Daxeam takes full advantage of the core benefits of the Microsoft platform, inheriting collaboration tools such as Microsoft SharePoint, Enterprise Portal and Microsoft Office.

Please visit our website www.daxeam.com



Want to know more?

Please contact Daxeam:

North America

+1 604 899 6092
info@daxeam.com

www.daxeam.com

Asia Pacific

1300 660 471
info@daxeam.com.au

www.daxeam.com

The Daxeam™ trademark is the property of UXC Eclipse Pty Ltd.

Microsoft®, Microsoft Dynamics™, Microsoft Office™, Microsoft SQL Server™ and Microsoft SharePoint™ are registered trademarks of Microsoft Corporation.